

Product Information

Size:

100ul

Reactivity:

Human

Source:

Rabbit

Isotype:

IgG

Applications:

ELISA, WB, IHC, IF

Recommended dilutions:

ELISA:1:2000-1:10000, WB:1:500-1:3000,
IHC:1:50-1:100, IF:1:100-1:500

Protein Background:

Required for genome-wide de novo methylation and is essential for the establishment of DNA methylation patterns during development. DNA methylation is coordinated with methylation of histones. May preferentially methylates nucleosomal DNA within the nucleosome core region. May function as transcriptional co-repressor by associating with CBX4 and independently of DNA methylation. Seems to be involved in gene silencing. By similarity. In association with DNMT1 and via the recruitment of CTCFL/BORIS, involved in activation of BAG1 gene expression by modulating dimethylation of promoter histone H3 at H3K4 and H3K9. Isoforms 4 and 5 are probably not functional due to the deletion of two conserved methyltransferase motifs. Function as transcriptional corepressor by associating with ZHX1.

Gene ID:

DNMT3B

Uniprot

Q9UBC3

Synonyms:

DNA (cytosine-5)-methyltransferase 3B; EC 2.1.1.37; Dnmt3b; DNA methyltransferase HsaIIIB; DNA MTase HsaIIIB

Immunogen:

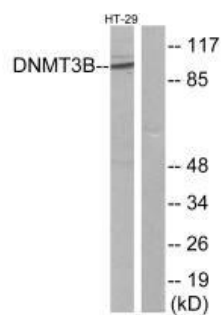
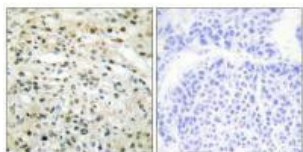
Synthesized peptide derived from N-terminal of human DNMT3B.

Storage:

Rabbit IgG in phosphate buffered saline (without Mg²⁺ and Ca²⁺), pH 7.4, 150mM NaCl, 0.02% sodium azide and 50% glycerol.

Product Images

Immunohistochemistry analysis of paraffin-embedded human liver carcinoma tissue using DNMT3B antibody.



Western blot analysis of extracts from HT-29 cells, using DNMT3B antibody.

Immunofluorescence analysis of HeLa cells, using DNMT3B antibody.

