

Phospho-EZR (Thr567) Antibody



PACO23866

Product Information

Size:

100ul

Reactivity:

Human, Mouse, Rat

Source:

Rabbit

Isotype:

IgG

Applications:

ELISA, WB

Recommended dilutions:

ELISA:1:2000-1:10000, WB:1:500-1:1000

Protein Background:

Probably involved in connections of major cytoskeletal structures to the plasma membrane. In epithelial cells, required for the formation of microvilli and membrane ruffles on the apical pole. Along with PLEKHG6, required for normal macropinocytosis.

Gene ID:

EZR

Uniprot

P15311

Synonyms:

Cytovillin; EZRI; VIL2; Villin 2; p81

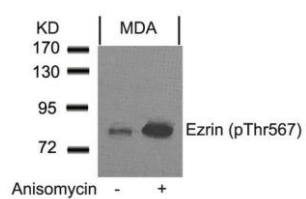
Immunogen:

Peptide sequence around phosphorylation site of threonine 567 (Y-K-T(p)-L-R) derived from Human Ezrin.

Storage:

Supplied at 1.0mg/mL in phosphate buffered saline (without Mg²⁺ and Ca²⁺), pH 7.4, 150mM NaCl, 0.02% sodium azide and 50% glycerol.

Product Images



Western blot analysis of extracts from MDA cells untreated or treated with anisomycin using Ezrin(Phospho-Thr567) Antibody.