

Phospho-RAC1 (Ser71) Antibody



PACO23867

Product Information

Size:

100ul

Reactivity:

Human, Mouse, Rat

Source:

Rabbit

Isotype:

IgG

Applications:

ELISA, WB

Recommended dilutions:

ELISA:1:2000-1:10000, WB:1:500-1:1000

Protein Background:

Rac1 encoded by this gene is a GTPase which belongs to the RAS superfamily of small GTP-binding proteins. Members of this superfamily appear to regulate a diverse array of cellular events, including the control of cell growth, cytoskeletal reorganization, and the activation of protein kinases. Two transcript variants encoding different isoforms have been found for this gene.

Gene ID:

RAC1

Uniprot

P63000

Synonyms:

Ras-like protein TC25; Ras-related C3 botulinum toxin substrate 1; p21-Rac1

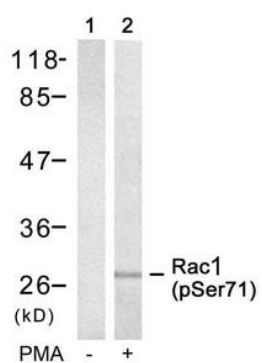
Immunogen:

Peptide sequence around phosphorylation site of serine 71 (P-L-S(p)-Y-P) derived from Human Rac1.

Storage:

Supplied at 1.0mg/mL in phosphate buffered saline (without Mg²⁺ and Ca²⁺), pH 7.4, 150mM NaCl, 0.02% sodium azide and 50% glycerol.

Product Images



Western blot analysis of extracts from 293 cells untreated(lane 1) or treated with PMA(lane 2) using Rac1(Phospho-Ser71) Antibody.