

Phospho-SYT1 (Ser309) Antibody



PACO23870

Product Information

Size:

100ul

Reactivity:

Human, Mouse, Rat

Source:

Rabbit

Isotype:

IgG

Applications:

ELISA, IF

Recommended dilutions:

ELISA:1:2000-1:10000, IF:1:100-1:200

Protein Background:**Gene ID:**

SYT1

Uniprot

P21579

Synonyms:

SYT1; Syt1; Synaptotagmin I; P65; SYT

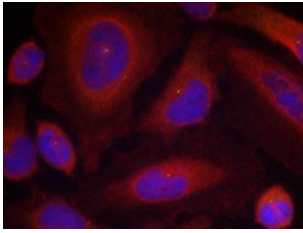
Immunogen:

Peptide sequence around phosphorylation site of serine 309 (G-L-S(p)-D-P) derived from Human Synaptotagmin 1.

Storage:

Supplied at 1.0mg/mL in phosphate buffered saline (without Mg²⁺ and Ca²⁺), pH 7.4, 150mM NaCl, 0.02% sodium azide and 50% glycerol.

Product Images



Immunofluorescence staining of methanol-fixed HeLa cells using Synaptotagmin 1 (Phospho-Ser309) Antibody.