

Phospho-SYT1/SYT2 (Thr202/199) Antibody



PACO23871

Product Information

Size:

100ul

Reactivity:

Human, Mouse, Rat

Source:

Rabbit

Isotype:

IgG

Applications:

ELISA, IF

Recommended dilutions:

ELISA:1:2000-1:10000, IF:1:100-1:200

Protein Background:**Gene ID:**

SYT1/SYT2

Uniprot

P21579/Q8N9I0

Synonyms:

SYT1/2; SytI/II; Synaptotagmin I/II; P65; SYT

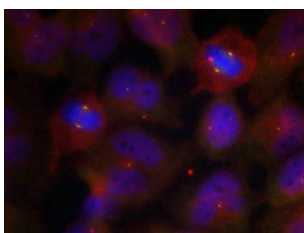
Immunogen:

Peptide sequence around phosphorylation site of threonine 202/199 (R-K-T(p)-L-N) derived from Human Synaptotagmin 1/2.

Storage:

Supplied at 1.0mg/mL in phosphate buffered saline (without Mg²⁺ and Ca²⁺), pH 7.4, 150mM NaCl, 0.02% sodium azide and 50% glycerol.

Product Images



Immunofluorescence staining of methanol-fixed HeLa cells using Synaptotagmin 1/2 (Phospho-Thr202/199) Antibody.