

Phospho-GRIA2 (Ser880) Antibody



PACO23884

Product Information

Size:

100ul

Reactivity:

Human, Mouse, Rat

Source:

Rabbit

Isotype:

IgG

Applications:

ELISA, WB

Recommended dilutions:

ELISA:1:2000-1:10000, WB:1:500-1:1000

Protein Background:**Gene ID:**

GRIA2

Uniprot

P42262

Synonyms:

GRIA2; GluR-2; GluR-B; GluR-K2; AMPA 2

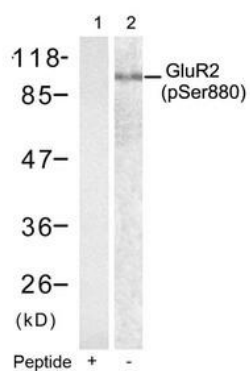
Immunogen:

Peptide sequence around phosphorylation site of serine 880 (I-E-S(p)-V-K) derived from Human Glutamate receptor 2.

Storage:

Supplied at 1.0mg/mL in phosphate buffered saline (without Mg²⁺ and Ca²⁺), pH 7.4, 150mM NaCl, 0.02% sodium azide and 50% glycerol.

Product Images



Western blot analysis of extracts from mouse brain tissue using Glutamate receptor 2(Precursor)(phospho-Ser880) antibody(Lane 2) and the same antibody preincubated with blocking peptide(Lane1).