

Phospho-SMAD2 (Ser467) Antibody



PACO23888

Product Information

Size:

100ul

Reactivity:

Human, Mouse, Rat

Source:

Rabbit

Isotype:

IgG

Applications:

ELISA, WB

Recommended dilutions:

ELISA:1:2000-1:10000, WB:1:500-1:1000

Protein Background:

Transcriptional modulator activated by TGF-beta and activin type 1 receptor kinase. SMAD2 is a receptor-regulated SMAD (R-SMAD). May act as a tumor suppressor in colorectal carcinoma.

Gene ID:

SMAD2

Uniprot

Q15796

Synonyms:

JV18-1; MADH2; MADR2; Mad-related protein 2; Mothers against DPP homolog 2

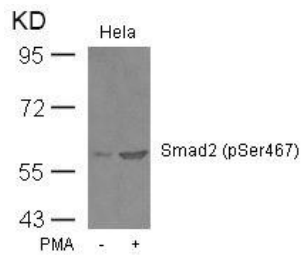
Immunogen:

Peptide sequence around phosphorylation site of serine 467 (C-S-S-M-S(p)) derived from Human Smad2.

Storage:

Supplied at 1.0mg/mL in phosphate buffered saline (without Mg²⁺ and Ca²⁺), pH 7.4, 150mM NaCl, 0.02% sodium azide and 50% glycerol.

Product Images



Western blot analysis of extracts from HeLa cells untreated or treated with PMA using Smad2(Phospho-Ser467) Antibody.