

Phospho-TH (Ser19) Antibody



PACO23892

Product Information

Size:

100ul

Reactivity:

Rat

Source:

Rabbit

Isotype:

IgG

Applications:

ELISA, IF

Recommended dilutions:

ELISA:1:2000-1:10000, IF:1:100-1:200

Protein Background:

The protein encoded by Tyrosine Hydroxylase is involved in the conversion of tyrosine to dopamine. It is the rate-limiting enzyme in the synthesis of catecholamines, hence plays a key role in the physiology of adrenergic neurons. Mutations in this gene have been associated with autosomal recessive Segawa syndrome. Alternatively spliced transcript variants encoding different isoforms have been noted for this gene.

Gene ID:

TH

Uniprot

P07101

Synonyms:

TY3H; TYH; Tyrosine 3-hydroxylase; tyrosine hydroxylase;

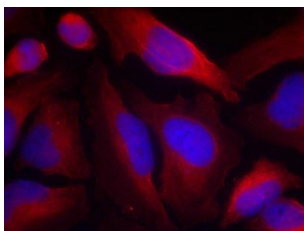
Immunogen:

Peptide sequence around phosphorylation site of serine19 (A-V-S(p)-E-Q) derived from Rat Tyrosine Hydroxylase (TH).

Storage:

Supplied at 1.0mg/mL in phosphate buffered saline (without Mg²⁺ and Ca²⁺), pH 7.4, 150mM NaCl, 0.02% sodium azide and 50% glycerol.

Product Images



Immunofluorescence staining of methanol-fixed HeLa cells using Tyrosine Hydroxylase(Phospho-Ser19) Antibody.