

# Phospho-PLCG2 (Tyr1217) Antibody



PACO23895

---

## Product Information

**Size:**

100ul

**Reactivity:**

Human, Mouse, Rat

**Source:**

Rabbit

**Isotype:**

IgG

**Applications:**

ELISA, IHC

**Recommended dilutions:**

ELISA:1:2000-1:10000, IHC:1:50-1:100

**Protein Background:**

The production of the second messenger molecules diacylglycerol (DAG) and inositol 1,4,5-trisphosphate (IP3) is mediated by activated phosphatidylinositol-specific phospholipase C enzymes. It is a crucial enzyme in transmembrane signaling.

**Gene ID:**

PLCG2

**Uniprot**

P16885

**Synonyms:**

PLC-IV; PLC-gamma2; Phospholipase C-gamma-2

**Immunogen:**

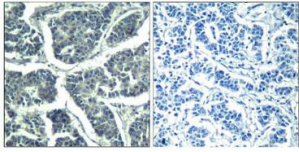
Peptide sequence around phosphorylation site of tyrosine 1217 (F-L-Y(p)-D-T) derived from Human PLCg2.

**Storage:**

Supplied at 1.0mg/mL in phosphate buffered saline (without Mg<sup>2+</sup> and Ca<sup>2+</sup>), pH 7.4, 150mM NaCl, 0.02% sodium azide and 50% glycerol.

## Product Images

---



Immunohistochemical analysis of paraffin-embedded human breast carcinoma tissue using PLC-g2(Phospho-Tyr1217) Antibody(left) or the same antibody preincubated with blocking peptide(right).