

Phospho-EIF2S2 (Ser2) Antibody



PACO23899

Product Information

Size:

100ul

Reactivity:

Human, Mouse

Source:

Rabbit

Isotype:

IgG

Applications:

ELISA, WB

Recommended dilutions:

ELISA:1:2000-1:10000, WB:1:500-1:1000

Protein Background:**Gene ID:**

EIF2S2

Uniprot

P20042

Synonyms:

EIF2S2; EIF2; EIF2B

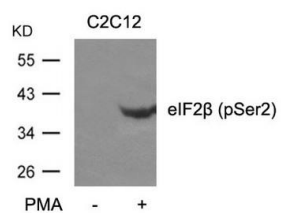
Immunogen:

Peptide sequence around phosphorylation site of serine 2 (M-S(p)-G-D-E) derived from Human eIF2].

Storage:

Supplied at 1.0mg/mL in phosphate buffered saline (without Mg²⁺ and Ca²⁺), pH 7.4, 150mM NaCl, 0.02% sodium azide and 50% glycerol.

Product Images



Western blot analysis of extracts from C2C12 cells untreated or treated with PMA using eIF2β(phospho-Ser2) Antibody.