

Phospho-BRCA1 (Ser988) Antibody



PACO23903

Product Information

Size:

100ul

Reactivity:

Human

Source:

Rabbit

Isotype:

IgG

Applications:

ELISA, IF

Recommended dilutions:

ELISA:1:2000-1:10000, IF:1:100-1:200

Protein Background:**Gene ID:**

BRCA1

Uniprot

P38398

Synonyms:

RNF53

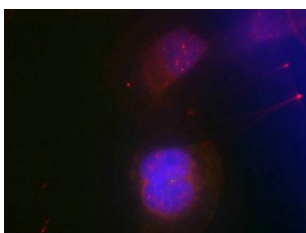
Immunogen:

Peptide sequence around phosphorylation site of serine 988 (I-K-S(p)-F-V) derived from Human BRCA1.

Storage:

Supplied at 1.0mg/mL in phosphate buffered saline (without Mg²⁺ and Ca²⁺), pH 7.4, 150mM NaCl, 0.02% sodium azide and 50% glycerol.

Product Images



Immunofluorescence staining of methanol-fixed HeLa cells using BRCA1(Phospho-Ser988) Antibody.