

# Phospho-KDR (Tyr1059) Antibody



PACO23905

---

## Product Information

**Size:**

100ul

**Reactivity:**

Human, Mouse

**Source:**

Rabbit

**Isotype:**

IgG

**Applications:**

ELISA, WB

**Recommended dilutions:**

ELISA:1:2000-1:10000, WB:1:500-1:1000

**Protein Background:**

Receptor for VEGF or VEGFC. Has a tyrosine-protein kinase activity. The VEGF-kinase ligand/receptor signaling system plays a key role in vascular development and regulation of vascular permeability. In case of HIV-1 infection, the interaction with extracellular viral Tat protein seems to enhance angiogenesis in Kaposi's sarcoma lesions.

**Gene ID:**

KDR

**Uniprot**

P35968

**Synonyms:**

FLK1; CD309; VEGFR; KDR;

**Immunogen:**

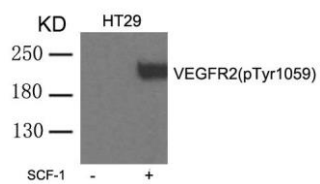
Peptide sequence around phosphorylation site of tyrosine 1059 (P-D-Y(p)-V-R) derived from Human VEGFR2.

**Storage:**

Supplied at 1.0mg/mL in phosphate buffered saline (without Mg<sup>2+</sup> and Ca<sup>2+</sup>), pH 7.4, 150mM NaCl, 0.02% sodium azide and 50% glycerol.

## Product Images

---



Western blot analysis of extracts from HT29 cells untreated or treated with SCF-1 using VEGFR2(phospho-Tyr1059) Antibody.