

Phospho-RPS6 (Ser235/236) Antibody



PACO23913

Product Information

Size:

100ul

Reactivity:

Human, Mouse, Rat

Source:

Rabbit

Isotype:

IgG

Applications:

ELISA, WB

Recommended dilutions:

ELISA:1:2000-1:10000, WB:1:500-1:1000

Protein Background:

May play an important role in controlling cell growth and proliferation through the selective translation of particular classes of mRNA.

Gene ID:

RPS6

Uniprot

P62753

Synonyms:

NP33; RPS6; RS6

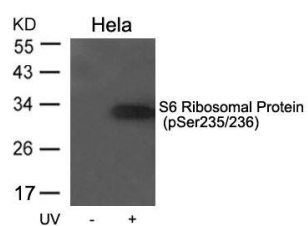
Immunogen:

Peptide sequence around phosphorylation site of serine 235/236 (R-L-S(p)-S(p)-L-R) derived from Human S6 Ribosomal Protein.

Storage:

Supplied at 1.0mg/mL in phosphate buffered saline (without Mg²⁺ and Ca²⁺), pH 7.4, 150mM NaCl, 0.02% sodium azide and 50% glycerol.

Product Images



Western blot analysis of extracts from HeLa cells untreated or treated with UV using S6 Ribosomal Protein(Phospho-Ser235/236) Antibody.