

Phospho-SMAD1 (Ser206) Antibody



PACO23914

Product Information

Size:

100ul

Reactivity:

Human, Mouse, Rat

Source:

Rabbit

Isotype:

IgG

Applications:

ELISA, WB

Recommended dilutions:

ELISA:1:2000-1:10000, WB:1:500-1:1000

Protein Background:

Transcriptional modulator activated by BMP (bone morphogenetic proteins) type 1 receptor kinase. SMAD1 is a receptor-regulated SMAD (R-SMAD).

Gene ID:

SMAD1

Uniprot

Q15797

Synonyms:

Mad-related protein 1; SMAD 1; hSMAD1; Transforming growth factor-beta-signaling protein 1;

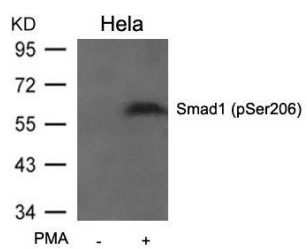
Immunogen:

Peptide sequence around phosphorylation site of serine 206 (P-H-S(p)-P-T) derived from Human Smad1.

Storage:

Supplied at 1.0mg/mL in phosphate buffered saline (without Mg²⁺ and Ca²⁺), pH 7.4, 150mM NaCl, 0.02% sodium azide and 50% glycerol.

Product Images



Western blot analysis of extracts from HeLa cells untreated or treated with PMA using Smad1(Phospho-Ser206) Antibody.