

Phospho-FAM129A (Ser602) Antibody



PACO23915

Product Information

Size:

100ul

Reactivity:

Human

Source:

Rabbit

Isotype:

IgG

Applications:

ELISA, WB

Recommended dilutions:

ELISA:1:2000-1:10000, WB:1:500-1:1000

Protein Background:**Gene ID:**

FAM129A

Uniprot

Q9BZQ8

Synonyms:

FAM129A

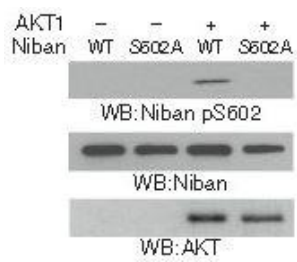
Immunogen:

Peptide sequence around phosphorylation site of serine 602 (R-A-S(p)-A-I) derived from Human Niban.

Storage:

Supplied at 1.0mg/mL in phosphate buffered saline (without Mg²⁺ and Ca²⁺), pH 7.4, 150mM NaCl, 0.02% sodium azide and 50% glycerol.

Product Images



Western blot analysis in vitro kinase assays were performed by mixing purified bacterially expressed WT His-Niban or the His-Niban S602A with or without purified active AKT1 using Niban (Phospho-Ser602) Antibody.