

Phospho-BCL2 (Ser70) Antibody



PACO23921

Product Information

Size:

100ul

Reactivity:

Human

Source:

Rabbit

Isotype:

IgG

Applications:

ELISA, IHC

Recommended dilutions:

ELISA:1:2000-1:10000, IHC:1:50-1:100

Protein Background:**Gene ID:**

BCL2

Uniprot

P10415

Synonyms:

Bcl-2; PPP1R50

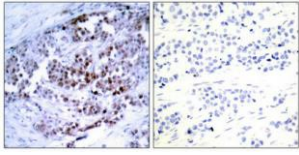
Immunogen:

Peptide sequence around phosphorylation site of serine 70(R-T-S(p)-P-L) derived from Human BCL-2.

Storage:

Supplied at 1.0mg/mL in phosphate buffered saline (without Mg²⁺ and Ca²⁺), pH 7.4, 150mM NaCl, 0.02% sodium azide and 50% glycerol.

Product Images



Immunohistochemical analysis of paraffin-embedded human breast carcinoma, using BCL-2 (phospho-Ser70) antibody.