

# Phospho-IRS1 (Ser307) Antibody



PACO23922

---

## Product Information

**Size:**

100ul

**Reactivity:**

Human, Mouse, Rat

**Source:**

Rabbit

**Isotype:**

IgG

**Applications:**

ELISA, IHC

**Recommended dilutions:**

ELISA:1:2000-1:10000, IHC:1:50-1:100

**Protein Background:****Gene ID:**

IRS1

**Uniprot**

P35568

**Synonyms:**

HIRS-1

**Immunogen:**

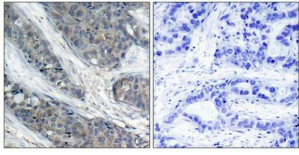
Peptide sequence around phosphorylation site of serine 307(T-E-S(p)-I-T) derived from Human IRS-1.

**Storage:**

Supplied at 1.0mg/mL in phosphate buffered saline (without Mg<sup>2+</sup> and Ca<sup>2+</sup>), pH 7.4, 150mM NaCl, 0.02% sodium azide and 50% glycerol.

## Product Images

---



Immunohistochemical analysis of paraffin-embedded human breast carcinoma tissue, using IRS-1 (phospho-Ser307) antibody.