

Phospho-OPRM1 (Ser375) Antibody



PACO23924

Product Information

Size:

100ul

Reactivity:

Human, Mouse, Rat

Source:

Rabbit

Isotype:

IgG

Applications:

ELISA, WB

Recommended dilutions:

ELISA:1:2000-1:10000, WB:1:500-1:1000

Protein Background:**Gene ID:**

OPRM1

Uniprot

P35372

Synonyms:

MOP; MOR; LMOR; MOR1; OPRM

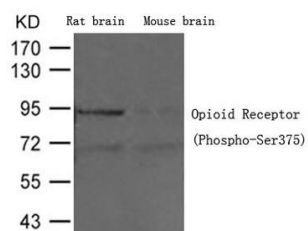
Immunogen:

Peptide sequence around phosphorylation site of serine 375(H-P-S(p)-T-A) derived from Human Opioid Receptor.

Storage:

Supplied at 1.0mg/mL in phosphate buffered saline (without Mg²⁺ and Ca²⁺), pH 7.4, 150mM NaCl, 0.02% sodium azide and 50% glycerol.

Product Images



Western blot analysis of extracts from Rat brain tissue and Mouse brain tissue using Opioid Receptor (Phospho-Ser375) Antibody.