

# Phospho-FYN (Tyr530) Antibody



PACO23931

---

## Product Information

**Size:**

100ul

**Reactivity:**

Human, Mouse, Rat

**Source:**

Rabbit

**Isotype:**

IgG

**Applications:**

ELISA, WB

**Recommended dilutions:**

ELISA:1:2000-1:10000, WB:1:500-1:1000

**Protein Background:****Gene ID:**

FYN

**Uniprot**

P06241

**Synonyms:**

SLK, SYN, p59-FYN

**Immunogen:**

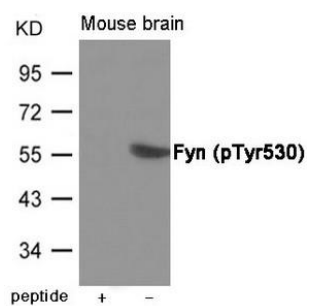
Peptide sequence around phosphorylation site of Tyrosine 530(P-Q-Y(p)-Q-P) derived from Human Fyn.

**Storage:**

Supplied at 1.0mg/mL in phosphate buffered saline (without Mg<sup>2+</sup> and Ca<sup>2+</sup>), pH 7.4, 150mM NaCl, 0.02% sodium azide and 50% glycerol.

## Product Images

---



Western blot analysis of extracts from Mouse brain tissue using Fyn (Phospho-Tyr530) Antibody. The lane on the left is treated with the antigen-specific peptide.