

# Phospho-EGFR (Tyr1016) Antibody



PACO23935

---

## Product Information

**Size:**

100ul

**Reactivity:**

Human, Mouse, Rat

**Source:**

Rabbit

**Isotype:**

IgG

**Applications:**

ELISA, WB

**Recommended dilutions:**

ELISA:1:2000-1:10000, WB:1:500-1:1000

**Protein Background:****Gene ID:**

EGFR

**Uniprot**

P00533

**Synonyms:**

ERBB, HER1, mENA, ERBB1, PIG61

**Immunogen:**

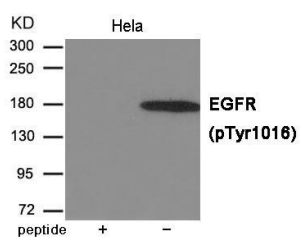
Peptide sequence around phosphorylation site of Tyrosine 1016(D-E-Y(p)-L-I) derived from Human EGFR.

**Storage:**

Supplied at 1.0mg/mL in phosphate buffered saline (without Mg<sup>2+</sup> and Ca<sup>2+</sup>), pH 7.4, 150mM NaCl, 0.02% sodium azide and 50% glycerol.

## Product Images

---



Western blot analysis of extracts from HeLa cells using EGFR (Phospho-Tyr1016) Antibody. The lane on the left is treated with the antigen-specific peptide.