

# Phospho-RPS6KB1 (Thr229) Antibody



PACO23941

---

## Product Information

**Size:**

100ul

**Reactivity:**

Human, Mouse, Rat

**Source:**

Rabbit

**Isotype:**

IgG

**Applications:**

ELISA, WB

**Recommended dilutions:**

ELISA:1:2000-1:10000, WB:1:500-1:1000

**Protein Background:****Gene ID:**

RPS6KB1

**Uniprot**

P23443

**Synonyms:**

S6K, PS6K, S6K1, STK14A, p70-S6K

**Immunogen:**

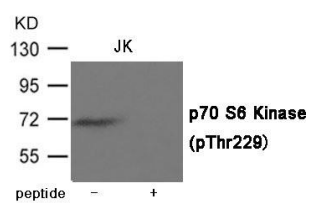
Peptide sequence around phosphorylation site of Threonine 229(N-H-Q(p)-G-H) derived from Human p70 S6 Kinase.

**Storage:**

Supplied at 1.0mg/mL in phosphate buffered saline (without Mg<sup>2+</sup> and Ca<sup>2+</sup>), pH 7.4, 150mM NaCl, 0.02% sodium azide and 50% glycerol.

## Product Images

---



Western blot analysis of extracts from JK cells using p70 S6 Kinase (Phospho-Thr229) Antibody. The lane on the right is treated with the antigen-specific peptide.