

Phospho-SOX9 (Ser181) Antibody



PACO23945

Product Information

Size:

100ul

Reactivity:

Human, Mouse

Source:

Rabbit

Isotype:

IgG

Applications:

ELISA, WB

Recommended dilutions:

ELISA:1:2000-1:10000, WB:1:500-1:1000

Protein Background:

Plays an important role in the normal skeletal development. May regulate the expression of other genes involved in chondrogenesis by acting as a transcription factor for these genes.

Gene ID:

SOX9

Uniprot

P48436

Synonyms:

CMD1, CMPD1, SRA1

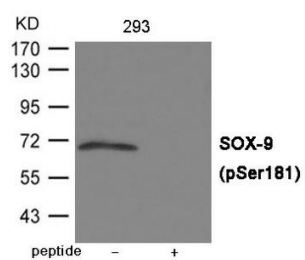
Immunogen:

Peptide sequence around phosphorylation site of Serine 181(R-K-S(p)-V-K) derived from Human SOX-9.

Storage:

Supplied at 1.0mg/mL in phosphate buffered saline (without Mg²⁺ and Ca²⁺), pH 7.4, 150mM NaCl, 0.02% sodium azide and 50% glycerol.

Product Images



Western blot analysis of extracts from 293 cells using SOX-9 (Phospho-Ser181) Antibody. The lane on the right is treated with the antigen-specific peptide.