

Phospho-ATXN1 (Ser776) Antibody



PACO23952

Product Information

Size:

100ul

Reactivity:

Human, Mouse

Source:

Rabbit

Isotype:

IgG

Applications:

ELISA, WB

Recommended dilutions:

ELISA:1:2000-1:10000, WB:1:500-1:1000

Protein Background:

Chromatin-binding factor that repress Notch signaling in the absence of Notch intracellular domain by acting as a CBF1 corepressor. Binds to the HEY promoter and might assist, along with NCOR2, RBPJ-mediated repression. Binds RNA in vitro. May be involved in RNA metabolism. The expansion of the polyglutamine tract may alter this function.

Gene ID:

ATXN1

Uniprot

P54253

Synonyms:

ATX1, D6S504E, SCA1

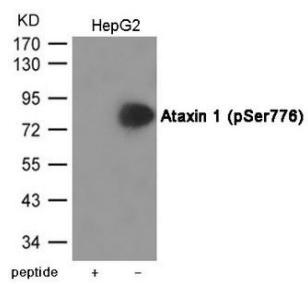
Immunogen:

Peptide sequence around phosphorylation site of Serine 776(R-W-S(p)-A-P) derived from Human Ataxin 1.

Storage:

Supplied at 1.0mg/mL in phosphate buffered saline (without Mg²⁺ and Ca²⁺), pH 7.4, 150mM NaCl, 0.02% sodium azide and 50% glycerol.

Product Images



Western blot analysis of extracts from HepG2 cells using Ataxin 1 (Phospho-Ser776) Antibody. The lane on the left is treated with the antigen-specific peptide.