

Phospho-HDAC1 (Ser421) Antibody



PACO23954

Product Information

Size:

100ul

Reactivity:

Human, Mouse, Rat

Source:

Rabbit

Isotype:

IgG

Applications:

ELISA, WB

Recommended dilutions:

ELISA:1:2000-1:10000, WB:1:500-1:1000

Protein Background:**Gene ID:**

HDAC1

Uniprot

Q13547

Synonyms:

HD1, RPD3, GON-10, RPD3L1

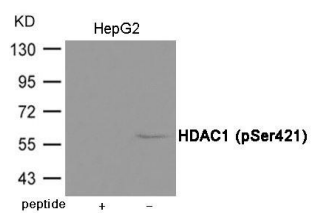
Immunogen:

Peptide sequence around phosphorylation site of Serine 421(E-F-S(p)-D-S) derived from Human HDAC1.

Storage:

Supplied at 1.0mg/mL in phosphate buffered saline (without Mg²⁺ and Ca²⁺), pH 7.4, 150mM NaCl, 0.02% sodium azide and 50% glycerol.

Product Images



Western blot analysis of extracts from HepG2 cells using HDAC1 (Phospho-Ser421) Antibody. The lane on the left is treated with the antigen-specific peptide.