

# Phospho-CASR (Thr888) Antibody



PACO23958

---

## Product Information

**Size:**

100ul

**Reactivity:**

Human, Mouse, Rat

**Source:**

Rabbit

**Isotype:**

IgG

**Applications:**

ELISA, WB

**Recommended dilutions:**

ELISA:1:2000-1:10000, WB:1:500-1:1000

**Protein Background:**

Senses changes in the extracellular concentration of calcium ions. The activity of this receptor is mediated by a G-protein that activates a phosphatidylinositol-calcium second messenger system.

**Gene ID:**

CASR

**Uniprot**

P41180

**Synonyms:**

CAR, FHH, FIH, HHC, EIG8

**Immunogen:**

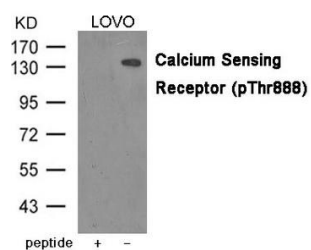
Peptide sequence around phosphorylation site of Threonine 888(R-A-T(p)-L-R) derived from Human Calcium Sensing Receptor.

**Storage:**

Supplied at 1.0mg/mL in phosphate buffered saline (without Mg<sup>2+</sup> and Ca<sup>2+</sup>), pH 7.4, 150mM NaCl, 0.02% sodium azide and 50% glycerol.

## Product Images

---



Western blot analysis of extracts from LOVO cells using Calcium Sensing Receptor (Phospho-Thr888) Antibody. The lane on the left is treated with the antigen-specific peptide.