

Phospho-CDC37 (Ser13) Antibody



PACO23966

Product Information

Size:

100ul

Reactivity:

Human, Mouse, Rat

Source:

Rabbit

Isotype:

IgG

Applications:

ELISA, WB

Recommended dilutions:

ELISA:1:2000-1:10000, WB:1:500-1:1000

Protein Background:

Co-chaperone that binds to numerous kinases and promotes their interaction with the Hsp90 complex, resulting in stabilization and promotion of their activity.

Gene ID:

CDC37

Uniprot

Q16543

Synonyms:

P50CDC37

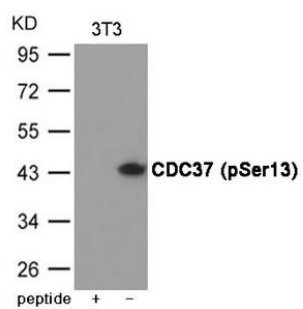
Immunogen:

Peptide sequence around phosphorylation site of Serine 13(E-V-S(p)-D-D) derived from Human CDC37.

Storage:

Supplied at 1.0mg/mL in phosphate buffered saline (without Mg²⁺ and Ca²⁺), pH 7.4, 150mM NaCl, 0.02% sodium azide and 50% glycerol.

Product Images



Western blot analysis of extracts from 3T3 cells using CDC37 (Phospho-Ser13) Antibody. The lane on the left is treated with the antigen-specific peptide.