

**Phospho-CAMK2B/CAMK2G/CAMK2D (Thr287)
Antibody
PACO23981**



Product Information

Size:

100ul

Reactivity:

Human, Mouse, Rat

Source:

Rabbit

Isotype:

IgG

Applications:

ELISA, WB

Recommended dilutions:

ELISA:1:2000-1:10000, WB:1:500-1:1000

Protein Background:

Gene ID:

CAMK2B/CAMK2G/CAMK2D

Uniprot

Q13554/Q13555/Q13557

Synonyms:

CAM2, CAMK2, CAMKB

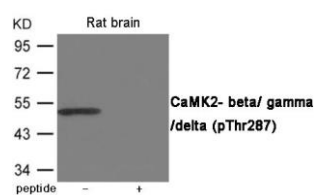
Immunogen:

Peptide sequence around phosphorylation site of Threonine 287(Q-E-T(p)-V-E) derived from Human CaMK2- beta/ gamma/ delta.

Storage:

Supplied at 1.0mg/mL in phosphate buffered saline (without Mg²⁺ and Ca²⁺), pH 7.4, 150mM NaCl, 0.02% sodium azide and 50% glycerol.

Product Images



Western blot analysis of extracts from Rat brain using CaMK2- beta/ gamma/ delta (Phospho-Thr287) Antibody. The lane on the right is treated with the antigen-specific peptide.