

# Phospho-CDC25A (Thr507) Antibody



PACO23990

---

## Product Information

**Size:**

100ul

**Reactivity:**

Human, Mouse, Rat

**Source:**

Rabbit

**Isotype:**

IgG

**Applications:**

ELISA, WB

**Recommended dilutions:**

ELISA:1:2000-1:10000, WB:1:500-1:1000

**Protein Background:**

Tyrosine protein phosphatase which functions as a dosage-dependent inducer of mitotic progression. Directly dephosphorylates CDK1 and stimulates its kinase activity. Also dephosphorylates CDK2 in complex with cyclin E, in vitro.

**Gene ID:**

CDC25A

**Uniprot**

P30304

**Synonyms:**

CDC25A2

**Immunogen:**

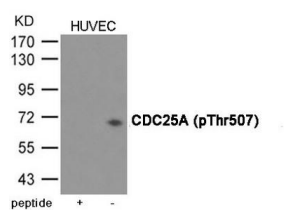
Peptide sequence around phosphorylation site of Threonine 507(S-R-T(p)-W-A) derived from Human CDC25A.

**Storage:**

Supplied at 1.0mg/mL in phosphate buffered saline (without Mg<sup>2+</sup> and Ca<sup>2+</sup>), pH 7.4, 150mM NaCl, 0.02% sodium azide and 50% glycerol.

## Product Images

---



Western blot analysis of extracts from HUVEC cells using CDC25A (Phospho-Thr507) Antibody. The lane on the left is treated with the antigen-specific peptide.