

# Phospho-NTRK1 (Tyr680/681) Antibody



PACO24001

---

## Product Information

**Size:**

100ul

**Reactivity:**

Human, Mouse, Rat

**Source:**

Rabbit

**Isotype:**

IgG

**Applications:**

ELISA, WB

**Recommended dilutions:**

ELISA:1:2000-1:10000, WB:1:500-1:1000

**Protein Background:****Gene ID:**

NTRK1

**Uniprot**

P04629

**Synonyms:**

High affinity nerve growth factor receptor precursor; NTRK1; Slow nerve growth; TRK; Trk-A

**Immunogen:**

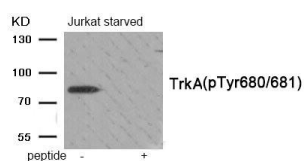
Peptide sequence around phosphorylation site of tyrosine 680/tyrosine 681 (T-D-Y(p)-Y(p)-R-V) derived from Human Trk A.

**Storage:**

Rabbit IgG in phosphate buffered saline (without Mg<sup>2+</sup> and Ca<sup>2+</sup>), pH 7.4, 150mM NaCl, 0.02% sodium azide and 50% glycerol.

## Product Images

---



Western blot analysis of extracts from Jurkat cells treated with starved using Phospho-Trk A (Tyr680/Tyr681) antibody. The lane on the right is treated with the antigen-specific peptide.