

Phospho-EZR (Tyr146) Antibody



PACO24005

Product Information

Size:

100ul

Reactivity:

Human, Mouse, Rat

Source:

Rabbit

Isotype:

IgG

Applications:

ELISA, WB

Recommended dilutions:

ELISA:1:2000-1:10000, WB:1:500-1:1000

Protein Background:**Gene ID:**

EZR

Uniprot

P15311

Synonyms:

Cytovillin; EZRI; p81; VIL2; Villin 2

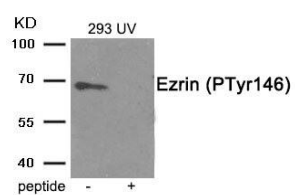
Immunogen:

Peptide sequence around phosphorylation site of tyrosine 146 (S-G-Y(p)-L-S) derived from Human Ezrin.

Storage:

Rabbit IgG in phosphate buffered saline (without Mg²⁺ and Ca²⁺), pH 7.4, 150mM NaCl, 0.02% sodium azide and 50% glycerol.

Product Images



Western blot analysis of extracts from 293 cells treated with UV using Phospho-Ezrin (Tyr146) antibody. The lane on the right is treated with the antigen-specific peptide.