

Phospho-PRKCD (Tyr64) Antibody



PACO24015

Product Information

Size:

100ul

Reactivity:

Human, Mouse, Rat

Source:

Rabbit

Isotype:

IgG

Applications:

ELISA, WB

Recommended dilutions:

ELISA:1:2000-1:10000, WB:1:500-1:1000

Protein Background:**Gene ID:**

PRKCD

Uniprot

Q05655

Synonyms:

KPCD; PKC-delta; PRKCD; kinase PKC-delta; nPKC-delta

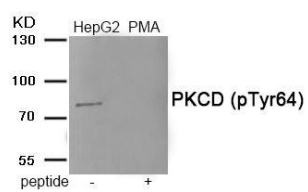
Immunogen:

Peptide sequence around phosphorylation site of Tyrosine 64 (H-I-Y(p)-E-G) derived from Human PKCD.

Storage:

Rabbit IgG in phosphate buffered saline (without Mg²⁺ and Ca²⁺), pH 7.4, 150mM NaCl, 0.02% sodium azide and 50% glycerol.

Product Images



Western blot analysis of extracts from HepG2 cells treated with PMA using Phospho-PKCD (Tyr64) antibody. The lane on the right is treated with the antigen-specific peptide.