

Phospho-SIRT1 (Ser47) Antibody



PACO24019

Product Information

Size:

100ul

Reactivity:

Human, Mouse

Source:

Rabbit

Isotype:

IgG

Applications:

ELISA, WB

Recommended dilutions:

ELISA:1:2000-1:10000, WB:1:500-1:1000

Protein Background:**Gene ID:**

SIRT1

Uniprot

Q96EB6

Synonyms:

hSIR2; hSIRT1; NAD-dependent deacetylase sirtuin 1; SIR1; SIR2L1

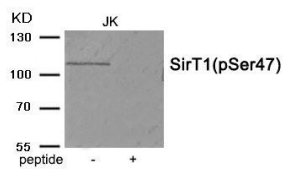
Immunogen:

Peptide sequence around phosphorylation site of serine 47(E-R-S(p)-P-G) derived from Human SirT1.

Storage:

Rabbit IgG in phosphate buffered saline (without Mg²⁺ and Ca²⁺), pH 7.4, 150mM NaCl, 0.02% sodium azide and 50% glycerol.

Product Images



Western blot analysis of extracts from JK tissue using SirT1 (Phospho-Ser47) antibody. The lane on the right is treated with the antigen-specific peptide.