

Phospho-CHUK/IKBKB (Ser176/177) Antibody



PACO24023

Product Information

Size:

100ul

Reactivity:

Human, Mouse, Rat

Source:

Rabbit

Isotype:

IgG

Applications:

ELISA, WB

Recommended dilutions:

ELISA:1:2000-1:10000, WB:1:500-1:1000

Protein Background:**Gene ID:**

CHUK/IKBKB

Uniprot

O15111/O14920

Synonyms:

FLJ40509; I-kappa-B kinase; IKBKB; kinase beta; NFKBIKB

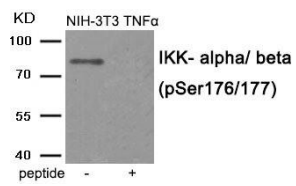
Immunogen:

Peptide sequence around phosphorylation site of serine 176/177 (Q-G-S(p)-L-C) derived from Human IKK-alpha/beta.

Storage:

Rabbit IgG in phosphate buffered saline (without Mg²⁺ and Ca²⁺), pH 7.4, 150mM NaCl, 0.02% sodium azide and 50% glycerol.

Product Images



Western blot analysis of extracts from NIH-3T3 cells treated with TNF using IKK- alpha/ beta (Phospho-Ser176/177) antibody. The lane on the right is treated with the antigen-specific peptide.