

# Phospho-RPS6KA5 (Ser212) Antibody



PACO24025

---

## Product Information

**Size:**

100ul

**Reactivity:**

Human, Mouse

**Source:**

Rabbit

**Isotype:**

IgG

**Applications:**

ELISA, WB

**Recommended dilutions:**

ELISA:1:2000-1:10000, WB:1:500-1:1000

**Protein Background:****Gene ID:**

RPS6KA5

**Uniprot**

O75582

**Synonyms:**

polypeptide 5; KS6A5; MSPK1; RPS6KA5; RLPK

**Immunogen:**

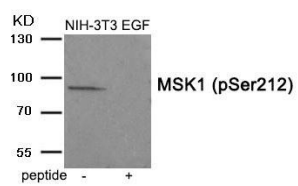
Peptide sequence around phosphorylation site of serine 212 (A-Y-S(p)-F-C) derived from Human MSK1.

**Storage:**

Rabbit IgG in phosphate buffered saline (without Mg<sup>2+</sup> and Ca<sup>2+</sup>), pH 7.4, 150mM NaCl, 0.02% sodium azide and 50% glycerol.

## Product Images

---



Western blot analysis of extracts from NIH-3T3 cells treated with EGF using MSK1 (Phospho-Ser212) antibody. The lane on the right is treated with the antigen-specific peptide.