

Phospho-NR3C1 (Ser226) Antibody



PACO24027

Product Information

Size:

100ul

Reactivity:

Human, Mouse, Rat

Source:

Rabbit

Isotype:

IgG

Applications:

ELISA, WB

Recommended dilutions:

ELISA:1:2000-1:10000, WB:1:500-1:1000

Protein Background:**Gene ID:**

NR3C1

Uniprot

P04150

Synonyms:

GCCR; GCR; GRL; NR3C1;

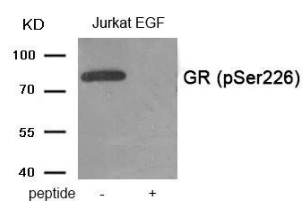
Immunogen:

Peptide sequence around phosphorylation site of serine 226 (L-L-S(p)-P-L) derived from Human GR.

Storage:

Rabbit IgG in phosphate buffered saline (without Mg²⁺ and Ca²⁺), pH 7.4, 150mM NaCl, 0.02% sodium azide and 50% glycerol.

Product Images



Western blot analysis of extracts from Jurkat cells treated with EGF using Phospho-GR (Ser226) antibody. The lane on the right is treated with the antigen-specific peptide.