

Phospho-GYS1 (Ser645) Antibody



PACO24034

Product Information

Size:

100ul

Reactivity:

Human, Mouse, Rat

Source:

Rabbit

Isotype:

IgG

Applications:

ELISA, WB

Recommended dilutions:

ELISA:1:2000-1:10000, WB:1:500-1:1000

Protein Background:**Gene ID:**

GYS1

Uniprot

P13807

Synonyms:

glycogen [starch] synthase; glycogen synthase; GYS;

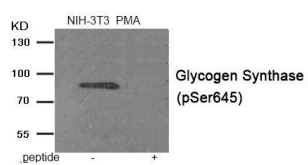
Immunogen:

Peptide sequence around phosphorylation site of serine 645 (P-P-S(p)-P-S) derived from Glycogen Synthase.

Storage:

Rabbit IgG in phosphate buffered saline (without Mg²⁺ and Ca²⁺), pH 7.4, 150mM NaCl, 0.02% sodium azide and 50% glycerol.

Product Images



Western blot analysis of extracts from NIH-3T3 cells treated with PMA using Phospho-Glycogen Synthase (Ser645) antibody. The lane on the right is treated with the antigen-specific peptide.