

# Phospho-CDC25A (Ser178) Antibody



PACO24036

---

## Product Information

**Size:**

100ul

**Reactivity:**

Human, Mouse, Rat

**Source:**

Rabbit

**Isotype:**

IgG

**Applications:**

ELISA, WB

**Recommended dilutions:**

ELISA:1:2000-1:10000, WB:1:500-1:1000

**Protein Background:****Gene ID:**

CDC25A

**Uniprot**

P30304

**Synonyms:**

CDC25M3; MPIP1; Dual specificity phosphatase Cdc25A; M-phase inducer phosphatase 1;

**Immunogen:**

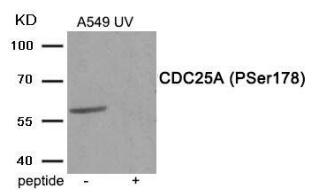
Peptide sequence around phosphorylation site of serine 178(Q-N-S(p)-A-P) derived from Human CDC25A.

**Storage:**

Rabbit IgG in phosphate buffered saline (without Mg<sup>2+</sup> and Ca<sup>2+</sup>), pH 7.4, 150mM NaCl, 0.02% sodium azide and 50% glycerol.

## Product Images

---



Western blot analysis of extracts from A549 cells treated with UV using Phospho-CDC25A (Ser178) antibody. The lane on the right is treated with the antigen-specific peptide.