

Phospho-CDC25B (Ser353) Antibody



PACO24037

Product Information

Size:

100ul

Reactivity:

Human

Source:

Rabbit

Isotype:

IgG

Applications:

ELISA, WB

Recommended dilutions:

ELISA:1:2000-1:10000, WB:1:500-1:1000

Protein Background:**Gene ID:**

CDC25B

Uniprot

P30305

Synonyms:

CDC25M2; MPIP2; Dual specificity phosphatase Cdc25B; CDC25HU2;

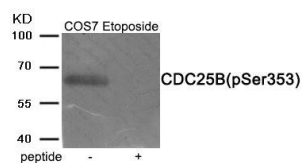
Immunogen:

Peptide sequence around phosphorylation site of serine 353(R-R-S(p)-V-T) derived from Human CDC25B.

Storage:

Rabbit IgG in phosphate buffered saline (without Mg²⁺ and Ca²⁺), pH 7.4, 150mM NaCl, 0.02% sodium azide and 50% glycerol.

Product Images



Western blot analysis of extracts from COS7 cells treated with Etoposide using Phospho-CDC25B (Ser353) antibody. The lane on the right is treated with the antigen-specific peptide.