

Phospho-PIN1 (Ser16) Antibody



PACO24047

Product Information

Size:

100ul

Reactivity:

Human, Mouse, Rat

Source:

Rabbit

Isotype:

IgG

Applications:

ELISA, WB

Recommended dilutions:

ELISA:1:2000-1:10000, WB:1:500-1:1000

Protein Background:**Gene ID:**

PIN1

Uniprot

Q13526

Synonyms:

PP1ase Pin1; Rotamase Pin1; Peptidyl-prolyl cis-trans isomerase NIMA-interacting 1; EC 5.2.1.8;

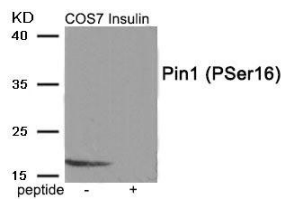
Immunogen:

Peptide sequence around phosphorylation site of serine16(R-M-S(p)-R-S) derived from Human Pin1.

Storage:

Rabbit IgG in phosphate buffered saline (without Mg²⁺ and Ca²⁺), pH 7.4, 150mM NaCl, 0.02% sodium azide and 50% glycerol.

Product Images



Western blot analysis of extracts from COS7 cells treated with Insulin using Phospho-Pin1 (Ser16) antibody. The lane on the right is treated with the antigen-specific peptide.