

# Phospho-BLNK (Tyr96) Antibody



PACO24050

---

## Product Information

**Size:**

100ul

**Reactivity:**

Human, Mouse

**Source:**

Rabbit

**Isotype:**

IgG

**Applications:**

ELISA, WB

**Recommended dilutions:**

ELISA:1:2000-1:10000, WB:1:500-1:1000

**Protein Background:****Gene ID:**

BLNK

**Uniprot**

Q8WV28

**Synonyms:**

B-cell linker protein; LY57; SLP-65; SLP65;

**Immunogen:**

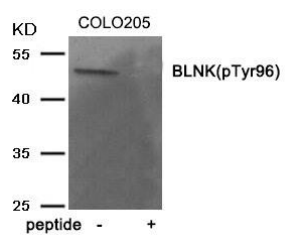
Peptide sequence around phosphorylation site of tyrosine 96(D-S-Y(p)-E-P) derived from Human BLNK.

**Storage:**

Rabbit IgG in phosphate buffered saline (without Mg<sup>2+</sup> and Ca<sup>2+</sup>), pH 7.4, 150mM NaCl, 0.02% sodium azide and 50% glycerol.

## Product Images

---



Western blot analysis of extracts from COLO205 tissue using BLNK (Phospho-Tyr96) antibody. The lane on the right is treated with the antigen-specific peptide.