

# Phospho-ALK (Tyr1507) Antibody



PACO24052

---

## Product Information

**Size:**

100ul

**Reactivity:**

Human, Mouse

**Source:**

Rabbit

**Isotype:**

IgG

**Applications:**

ELISA, WB

**Recommended dilutions:**

ELISA:1:2000-1:10000, WB:1:500-1:1000

**Protein Background:****Gene ID:**

ALK

**Uniprot**

Q9UM73

**Synonyms:**

kinase ALK; Anaplastic lymphoma kinase; CD246; ALK tyrosine kinase receptor precursor;

**Immunogen:**

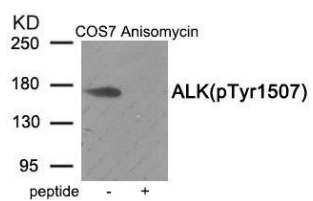
Peptide sequence around phosphorylation site of Tyrosine 1507 (P-T-Y(p)-G-S) derived from Human ALK.

**Storage:**

Rabbit IgG in phosphate buffered saline (without Mg<sup>2+</sup> and Ca<sup>2+</sup>), pH 7.4, 150mM NaCl, 0.02% sodium azide and 50% glycerol.

## Product Images

---



Western blot analysis of extracts from COS7 cells treated with Anisomycin using Phospho-ALK (Tyr1507) antibody. The lane on the right is treated with the antigen-specific peptide.