

Phospho-IKBKG (Ser31) Antibody



PACO24053

Product Information

Size:

100ul

Reactivity:

Human

Source:

Rabbit

Isotype:

IgG

Applications:

ELISA, WB

Recommended dilutions:

ELISA:1:2000-1:10000, WB:1:500-1:1000

Protein Background:**Gene ID:**

IKBKG

Uniprot

Q9Y6K9

Synonyms:

FIP-3; FIP3; I-kappa-B kinase gamma; IKBKG; IKKAP1

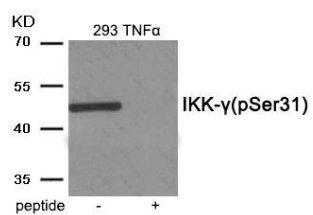
Immunogen:

Peptide sequence around phosphorylation site of serine 31 (E-E-S(p)-P-L) derived from Human IKK-gamma.

Storage:

Rabbit IgG in phosphate buffered saline (without Mg²⁺ and Ca²⁺), pH 7.4, 150mM NaCl, 0.02% sodium azide and 50% glycerol.

Product Images



Western blot analysis of extracts from 293 cells treated with TNF- α using Phospho-IKK- γ (Ser31) antibody. The lane on the right is treated with the antigen-specific peptide.