

Phospho-TP53 (Ser392) Antibody



PACO24055

Product Information

Size:

100ul

Reactivity:

Human

Source:

Rabbit

Isotype:

IgG

Applications:

ELISA, WB

Recommended dilutions:

ELISA:1:2000-1:10000, WB:1:500-1:1000

Protein Background:**Gene ID:**

TP53

Uniprot

P04637

Synonyms:

Antigen NY-CO-13; Cellular tumor antigen p53; Phosphoprotein p53; TP53; Tumor suppressor p53

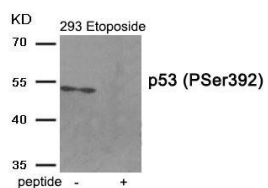
Immunogen:

Peptide sequence around phosphorylation site of serine 392 (P-D-S(p)-D) derived from Human p53.

Storage:

Rabbit IgG in phosphate buffered saline (without Mg²⁺ and Ca²⁺), pH 7.4, 150mM NaCl, 0.02% sodium azide and 50% glycerol.

Product Images



Western blot analysis of extracts from 293 cells treated with Etoposide using Phospho-p53 (Ser392) antibody. The lane on the right is treated with the antigen-specific peptide.