

Phospho-ADRB2 (Ser346) Antibody



PACO24056

Product Information

Size:

100ul

Reactivity:

Human

Source:

Rabbit

Isotype:

IgG

Applications:

ELISA, WB

Recommended dilutions:

ELISA:1:2000-1:10000, WB:1:500-1:1000

Protein Background:**Gene ID:**

ADRB2

Uniprot

P07550

Synonyms:

ADRB2R; B2AR; adrenergic receptor; beta-2;

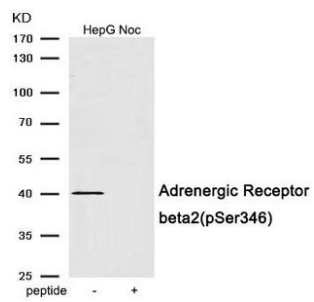
Immunogen:

Peptide sequence around phosphorylation site of serine 346 (R-S-S(p)-L-K) derived from Human Adrenergic Receptor beta2.

Storage:

Rabbit IgG in phosphate buffered saline (without Mg²⁺ and Ca²⁺), pH 7.4, 150mM NaCl, 0.02% sodium azide and 50% glycerol.

Product Images



Western blot analysis of extracts from HepG2 cells treated with Nocodazole using Phospho-Adrenergic Receptor beta2 (Ser346) antibody. The lane on the right is treated with the antigen-specific peptide.