

Phospho-RPS6KB1 (Thr389/412) Antibody



PACO24060

Product Information

Size:

100ul

Reactivity:

Human, Mouse, Rat

Source:

Rabbit

Isotype:

IgG

Applications:

ELISA, WB

Recommended dilutions:

ELISA:1:2000-1:10000, WB:1:500-1:1000

Protein Background:**Gene ID:**

RPS6KB1

Uniprot

P23443

Synonyms:

KS6B1; P70-S6K; RPS6KB1; Ribosomal protein S6 kinase; polypeptide 1

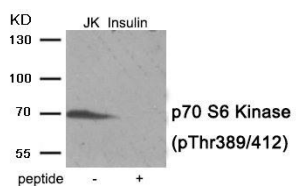
Immunogen:

Peptide sequence around phosphorylation site of threonine389/412(G-F-T(p)-Y-V) derived from Human p70 S6 Kinase.

Storage:

Rabbit IgG in phosphate buffered saline (without Mg²⁺ and Ca²⁺), pH 7.4, 150mM NaCl, 0.02% sodium azide and 50% glycerol.

Product Images



Western blot analysis of extracts from Jurkat cells treated with Insulin using Phospho-p70 S6 Kinase (Thr389/412) antibody. The lane on the right is treated with the antigen-specific peptide.