

Phospho-Stat5a/Stat5b (Ser725/730) Antibody



PACO24063

Product Information

Size:

100ul

Reactivity:

Human, Mouse, Rat

Source:

Rabbit

Isotype:

IgG

Applications:

ELISA, WB

Recommended dilutions:

ELISA:1:2000-1:10000, WB:1:500-1:1000

Protein Background:**Gene ID:**

Stat5a/Stat5b

Uniprot

P42230/P42232

Synonyms:

Signal transducer and activator of transcription 5B; STA5B; STAT5; transcription factor STAT5B;

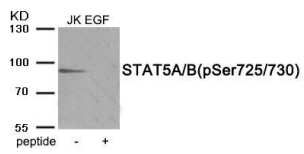
Immunogen:

Peptide sequence around phosphorylation site of serine725/730(A-P-S(p)-P-V) derived from Human STAT5A/B.

Storage:

Rabbit IgG in phosphate buffered saline (without Mg²⁺ and Ca²⁺), pH 7.4, 150mM NaCl, 0.02% sodium azide and 50% glycerol.

Product Images



Western blot analysis of extracts from Jurkat cells treated with EGF using Phospho-STAT5A/B (Ser725/730) antibody. The lane on the right is treated with the antigen-specific peptide.