

Phospho-CAMK4 (Thr196/200) Antibody



PACO24067

Product Information

Size:

100ul

Reactivity:

Human, Mouse, Rat

Source:

Rabbit

Isotype:

IgG

Applications:

ELISA, WB

Recommended dilutions:

ELISA:1:2000-1:10000, WB:1:500-1:1000

Protein Background:**Gene ID:**

CAMK4

Uniprot

Q16566

Synonyms:

CAM kinase-GR; CAMK4; CaMK IV; Calspermin; KCC4

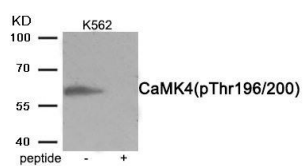
Immunogen:

Peptide sequence around phosphorylation site of threonine 200 (M-K-T(p)-V-C) derived from Human CaMK4 or threonine 196 (M-K-T(p)-V-C) derived from Mouse CaMK4.

Storage:

Rabbit IgG in phosphate buffered saline (without Mg²⁺ and Ca²⁺), pH 7.4, 150mM NaCl, 0.02% sodium azide and 50% glycerol.

Product Images



Western blot analysis of extracts from K562 cells treated with H₂O₂ using Phospho-CaMK4 (Thr196/200) antibody. The lane on the right is treated with the antigen-specific peptide.