

Phospho-RACGAP1 (Ser387) Antibody



PACO24068

Product Information

Size:

100ul

Reactivity:

Human, Mouse, Rat

Source:

Rabbit

Isotype:

IgG

Applications:

ELISA, WB

Recommended dilutions:

ELISA:1:2000-1:10000, WB:1:500-1:1000

Protein Background:**Gene ID:**

RACGAP1

Uniprot

Q9H0H5

Synonyms:

GTPase activating protein; GTPase activating protein ID-GAP; RAC GTPase-activating protein 1; RACGAP1; RAC GTPase-activating protein

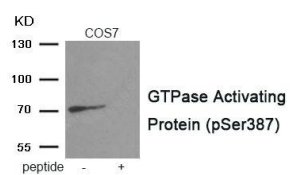
Immunogen:

Peptide sequence around phosphorylation site of serine 387 (R-I-S(p)-G-C) derived from Human GTPase Activating Protein.

Storage:

Rabbit IgG in phosphate buffered saline (without Mg²⁺ and Ca²⁺), pH 7.4, 150mM NaCl, 0.02% sodium azide and 50% glycerol.

Product Images



Western blot analysis of extracts from COS7 tissue using GTPase Activating Protein antibody. The lane on the right is treated with the antigen-specific peptide.