

Phospho-PGR (Ser294) Antibody



PACO24074

Product Information

Size:

100ul

Reactivity:

Human, Mouse, Rat

Source:

Rabbit

Isotype:

IgG

Applications:

ELISA, WB

Recommended dilutions:

ELISA:1:2000-1:10000, WB:1:500-1:1000

Protein Background:**Gene ID:**

PGR

Uniprot

P06401

Synonyms:

NR3C3; PGR; PRGR; Progesterone receptor;

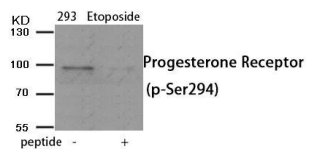
Immunogen:

Peptide sequence around phosphorylation site of serine 294 (G-R-S(p)-P-L) derived from Human Progesterone Receptor.

Storage:

Rabbit IgG in phosphate buffered saline (without Mg²⁺ and Ca²⁺), pH 7.4, 150mM NaCl, 0.02% sodium azide and 50% glycerol.

Product Images



Western blot analysis of extracts from 293 cells treated with Etoposide using Phospho-Progesterone Receptor (Ser294) antibody. The lane on the right is treated with the antigen-specific peptide.