

Phospho-PTPRC (Ser1007) Antibody



PACO24076

Product Information

Size:

100ul

Reactivity:

Human, Mouse, Rat

Source:

Rabbit

Isotype:

IgG

Applications:

ELISA, WB

Recommended dilutions:

ELISA:1:2000-1:10000, WB:1:500-1:1000

Protein Background:**Gene ID:**

PTPRC

Uniprot

P08575

Synonyms:

L-CA; LY-5; Leukocyte common antigen precursor; PTPRC; T200

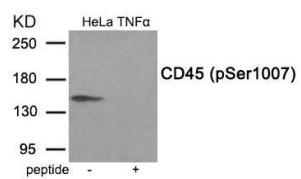
Immunogen:

Peptide sequence around phosphorylation site of serine 1007 (D-D-S(p)-D-S) derived from Human CD45.

Storage:

Rabbit IgG in phosphate buffered saline (without Mg²⁺ and Ca²⁺), pH 7.4, 150mM NaCl, 0.02% sodium azide and 50% glycerol.

Product Images



Western blot analysis of extracts from HeLa cells treated with TNF using Phospho-CD45 (Ser1007) antibody. The lane on the right is treated with the antigen-specific peptide.